



## Quality handrails

### For universal application

ONEELEVATOR.com has been producing quality handrails for applications of all kinds for many years.

- ONEELEVATOR.com handrails can be used in both indoor and outdoor locations. Ask for a copy of our information sheet on climate categories.
- ONEELEVATOR.com offers a wide variety of handrails for various application scenarios.
- ONEELEVATOR.com handrails are fitted to the escalator or walkway in a rapid operation.
- ONEELEVATOR.com handrails are available in a wealth of colours. Take your inspiration from our colour palette!

## Classic project



**Beijing West Railway Station**



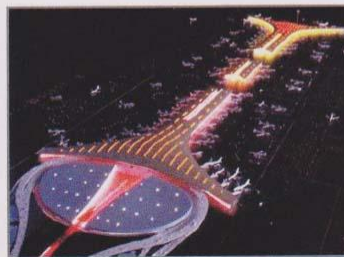
**Olympic National Park**



**Guangzhou BRT overpass**



**Hainan Rendez-Vous**



**Shanghai International Airport**



**Shenzhen International Airport**



## Structure of a Handrail

The ONEELEVATOR.com handrail - dynamic, functional and durable

ONEELEVATOR.com handrails have proven their worth as safe, reliable and low-maintenance products all over the world and under the widest variety of conditions. All of the handrail's components are carefully developed, approved and are constantly being improved, as we work in co-operation with our customers.

### Choose from a range of black and coloured handrails

ONEELEVATOR.com offers you black SBR handrails for any application. Take your inspiration from our colour palette!

### Staple-fibre sliding layer for use anywhere

ONEELEVATOR.com has been supplying handrails for indoor and outdoor applications for many years. The cotton sliding layer on escalators in the department store sector is tried-and-tested over many years of service. Underground railway escalators are subject to other environmental conditions calling for use of a synthetic sliding layer.

ONEELEVATOR.com has successfully combined the positive attributes of these two tried-and-tested sliding layers in the one product - our staple-fibre sliding layer. The staple-fibre handrail has been very well received for a number of years now for both new installations and in the spare parts market. Thanks to this sliding layer, the handrail's area of application can be extended, with the escalator also running more quietly.

We will be pleased to send you our information sheet on the appropriate areas of application of the staple-fibre sliding layer.

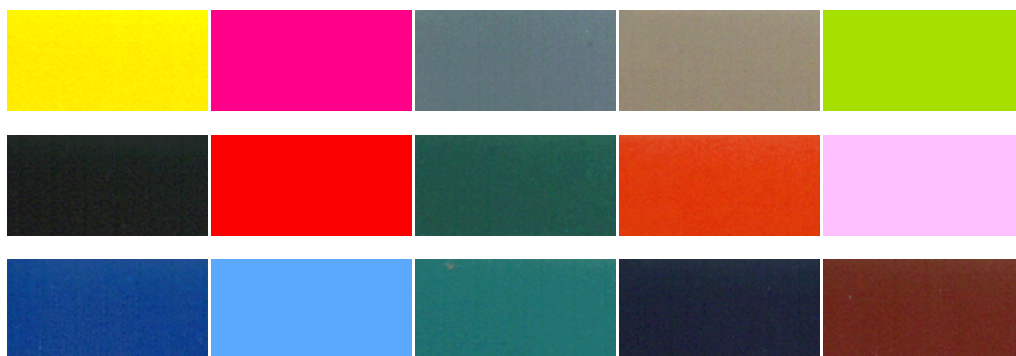
扶手带物理性能标准 Armrest Belt's Physical & mechanical function			
	项目 Property Name	计量 Unit	指标 Target
复盖胶层 Cover rubber level	拉伸强度 Tensile Strength	Mpa	≥12
	扯断伸长率 Elongation At Brak	%	≥300
	扯断变形 Pulls apart the distortion	%	≤30
	硬度 Hardness	度 (邵尔A)	75±5
	脆性温度 Tmperature Limit Of Brittleness	°C	≤-20
	磨损量 Abrasion loss	CM3/1.16Km	≤0.5
	老化系统 Ageing	70°C×72h	≥0.75
	屈挠次数 Flex Life	次	10万次无龟裂
	抗臭氧 Cracks, ozore	臭氧浓度50PPhm 96小时30°C 拉伸20%	0级
胶布层 Adhesive plaster level	胶布层间粘着强度 Adhesion Strength	KN/M	≥4
成品 End product	抗拉强度 (纵向) Lenseile Strength Band	KN	≥25
	开口握力 The opening of the entrance's grip	N(30mm宽, 扩张7mm)	≥49
钢丝 Steel wire	单根破断强度 The simple root snaps the intensity	N/根	1800
	H抽出 H extracts	N	470



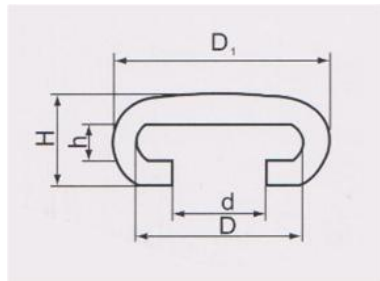


## Colours

ONEELEVATOR.com has exactly the colour you are looking for. We have 12 standard colours and a total of 25 in our range. One outstanding feature of ONEELEVATOR.com is the handrails' resistance to fading. This means that the colours neither discolour nor fade on exposure to sunlight. How you see the various colours will depend on your computer screen settings - do not make your choice of colour without inspecting a physical sample.

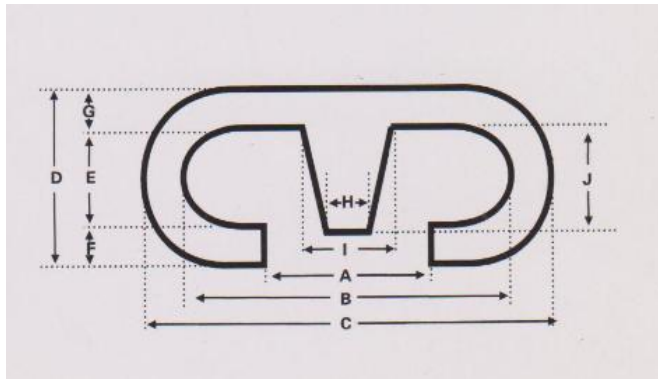


## C Type



扶手带型号规格尺寸Size						
顺序	尺寸 Size	高度 Height		宽度 Width		
	型号 Model	H	h	DI	D	d
1	OTIS	35.5±1	15.9 <sup>+0.5</sup> <sub>-0.5</sub>	82.5 <sup>+1.5</sup> <sub>-0.5</sub>	63.5±0.5	38 <sup>+1.6</sup> <sub>-1</sub>
2	OTIS-800 (V)	28±1	9.5 <sup>+1</sup>	76 <sub>-2</sub>	60 <sub>-2</sub>	39 <sup>+2</sup> <sub>-1</sub>
3	FT-300	35±1	15 <sup>+1</sup>	88 <sup>+4</sup> <sub>-2</sub>	68 <sub>-2</sub>	40 <sup>+3</sup> <sub>-1</sub>
4	SWE	34±1	12	82±2	62±2	33 <sup>+3</sup> <sub>-1</sub>
5	SDS	28.5±1.5	10.6±0.8	80 <sup>+3</sup> <sub>-1</sub>	62 <sup>-3</sup>	39 <sup>-3</sup>
6	现代	28.4±0.7	10.4±0.7	79.3±0.7	63.5±0.7	39.6 <sup>+1.5</sup> <sub>-0.7</sub>
7	LG	31.7 <sup>+1</sup>	11.5 <sup>+1</sup>	82 <sup>+1.5</sup>	63 <sup>+1.5</sup>	40 <sup>+1.5</sup>
8	日立	27.5	10 <sup>+1</sup>	80 <sup>+1</sup> <sub>-0.5</sub>	63 <sup>+1.5</sup>	40 <sup>+2</sup> <sub>-1</sub>
9	F/SW	28.5 <sub>-1</sub>	10 <sup>+1.5</sup>	80 <sub>-1</sub>	63 <sup>-2</sup>	40 <sup>+2</sup> <sub>-1</sub>
10	J	27	10	80	62 <sup>-3</sup>	41±1.5
11	XF	33±1	14	82±2	64	35 <sup>+2</sup>
12	SDG	32±1	12	86±2	62±2	36 <sup>+2</sup> <sub>-1</sub>
13	通力	28.15 <sup>+1.5</sup> <sub>-1</sub>	10.6±0.5	79.2 <sup>+2.5</sup>	62.8 <sup>+1.5</sup>	37.5 <sup>+2.5</sup>

## V Type



型号	尺寸	A	B	C	D	E	F	G	H	I	J
14FT-300V		42	68	88	35	15	10	10	7	18	18
15FT-800V		39	60	76	28	9.5	8	10	9.9	15.4	13
16 通力-V		37.5	62.8	79.2	28.15	10.6	8	10.5	10	17	13



## Operating conditions

### Ready for use at all times:

ONEELEVATOR.com handrails are guaranteed to operate perfectly assuming that operating conditions are adhered to, our cleaning and care instructions are observed and they are properly installed in new escalators or moving walkways, as well as being correctly serviced during operation. Any departure from the operating conditions set out below may adversely affect the service life of your handrail.

### Operating conditions:

#### Climatic influences:

- Ambient temperature: -15°C to +40°C
- Special operating instructions apply for temperatures below 0°C.
- Please request the corresponding documentation.

**LA**tmospheric humidity: max. 95% at 35°C

#### Reverse bending cycles:

- minimum negative bend diameter: 900 mm
- minimum positive bend diameter: 610 mm

#### Drive systems:

- rubberised drive wheel in contact with handrail sliding layer and pressure belt or pressure wheel on handrail cover.
- pulley wheel
- pressure-roller drive
- pre-tensioning force: max. 600 N at handrail
- driving force: max. 1000 N at handrail
- Please refer to our comment.

The data or test values we quote, our experiments and the technical advice on application we provide in writing or verbally are supplied to the best of our knowledge on the basis of the current state-of-the-art, however they should be taken purely as a non-binding reference and do not release you from your own responsibility to undertake testing. The application, use and processing of our products take place outwith our possible control and lie exclusively within your own area of responsibility. For guarantees we refer you to our General Terms & Conditions of Sale.



## Schematic diagram of handrail coil operation



## Handrail User Tips

Attention must be paid to following items in order to use the escalator rubber handrail reasonably, maintain its good performance and prolong the service life:

- I. Automatic escalator manufacturers shall select handrail with same type as escalator;
- II. During handrail transportation and storage:
  1. Damage to package shall be avoided. Exposing under direct sunshine or drench is not allowed;
  2. The handrail shall be placed horizontally and no piling up is allowed for excessive materials. The storage time shall not surpass two months to prevent the handrail from serious deformation and cause difficulty to commissioning.
  3. Handrail contact with oil, acid, alkali and sharp goods etc. is strictly prohibited.
  4. The handrail storage temperature shall be  $-35^{\circ}\text{C}$  and the humidity shall be in the range of 60%-80%.
- III. Hand rail installation & commissioning:
  1. After the hand rail is unpacked, technical measures must be taken to ensure no damage to the rubber surface and metal framework.

The bending radius of the both ends of the handrail shall not be smaller than 300 mm during transportation/handling.
  2. Before installation and commissioning, the roughness and installation parallelism of the accessories contacting the handrail shall be checked to prevent the handrail from mechanical damage.
  3. After the escalator installation and commissioning, the handrail installation shall not be over-tight or over-loose. Friction in running must be rolling type to avoid heating and damage.



4. After the handrail installation and commissioning, the bending radius of the both ends of the handrail shall not be smaller than 300mm if

the handrail is removed and plastic film wrapping is restored. Do not keep the handrail in tightened condition on the escalator for long.

5. After installation and commissioning by the user, the escalator must be run several minutes per week to prevent chap and distortion

from occurring at the turning point (Concentrated stress) of the both ends of the escalator due to long time of handrail stay if the

escalator is not used for a certain period.